

HS 2.2 UNIVERSAL CONTROLLER

HS 2.2 is a universal controller made for HVAC applications. It may be used for controlling e.g. pressure, differential pressure, temperature or illumination level. The input signal of 0-10V is responding the range of 0-100% in the controller. Depending on the unit of the input signal it can be scaled by commissioning for different units and scales by setting for the range the upper and lower limits. Possible units are: Pa, kPa, bar, °C, m/s, lux, CO₂ or CO.

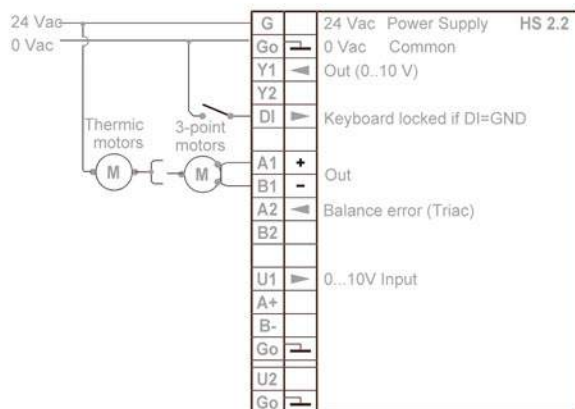
Set point and controller parameters can be set by using the display and buttons. For daily using only "+" and "-" buttons are needed. Additional buttons needed for commissioning are hidden under the cover.

One 0-10V input and one digital input are available. By switching the digital input to the 0V level (= G0) the buttons can be locked.

Outputs are for 0...10V controlled actuators and also for 3-point controlled or thermal (PWM) controlled actuators. There is also an output indicating failure function in cases when the controller does not reach the balance during the set time.

HS 2.2 controllers can be used in dry surroundings mounted on the wall surface or on the standard flush mounting boxes with a 60 mm fixing screw hole distance.

Wiring:



Technical data:

supply	24Vac/dc (20...26V) < 1 VA Note! Only the 0-10V output is working by the 24Vdc supply
inputs	1 x 0-10V, 10kohm 1 x DI, pot. free contact
output Y1	0...10V, 2mA
output A1, B1	24Vac 1A, (Note wiring!) for thermal - / 3 point actuators
output A2	failure signal
set point	0V = OK, 10V = failure
resolution	- 9999 ... +9999
proportional band Xp	1/1000 of the range
integration time Tn	1 ... 1000
3-p. act. driving time Mt	10...5000 s
allowed amb. humidity	30...300 s
terminals	0...95 % RH (non-condensing)
housing	1,5 mm ²
dimensions w x h x d	ABS-plastics, IP20
	87 x 86 x 32 mm

Ordering guide:

Model	Product number	Description
HS 2.2	1150240	universal controller